



GAI-TRONICS®
A HUBBELL COMPANY

EZ Page Front Panel Controls Replacement Kit

Model 12504-009

Confidentiality Notice

This manual is provided solely as an operational, installation, and maintenance guide and contains sensitive business and technical information that is confidential and proprietary to GAI-Tronics. GAI-Tronics retains all intellectual property and other rights in or to the information contained herein, and such information may only be used in connection with the operation of your GAI-Tronics product or system. This manual may not be disclosed in any form, in whole or in part, directly or indirectly, to any third party.

General Information

The Model 12504-009 Front Panel Controls Replacement Kit is used with the following EZ Page Intercom models: GC-AC1, GC-DC1, and GC-AC2. This kit includes the following components:

Qty Description

1	Knob
1	Front cover sealing nut for Listen/Talk switch
1	Front cover sealing nut for speaker volume/on-off switch
1	Wired Listen/Talk switch and speaker volume/on-off switch assembly
1	Hex nut
1	Anti-rotation ring

Required Tools

- #2 Phillips screwdriver
- 5/8-inch wrench
- 1/2-inch wrench
- .078-inch (5/64 inch) hex allen wrench

Installation



Disconnect power from the unit before opening or servicing the unit.

Removing the Old Front Panel Controls

1. Disconnect power to the unit.
2. Using the hex allen wrench, loosen the two screws that secure the knob and remove.
3. Using the #2 screwdriver, remove the six front panel screws that secure the front cover to the housing.
4. Slowly pull the front cover assembly from the rear housing—do not stress the attached wires.
5. Disconnect the connector (P3) from the internal printed circuit board assembly (PCBA).
Note the orientation of the potentiometer/switch (R1/SW1) and the toggle switch (SW2) for installation of the new controls.
6. Using the 5/8-inch wrench, remove and discard the sealing nut holding the toggle switch to the front cover.
7. Using the 1/2-inch wrench, remove and discard the sealing nut holding the potentiometer/switch to the front cover.

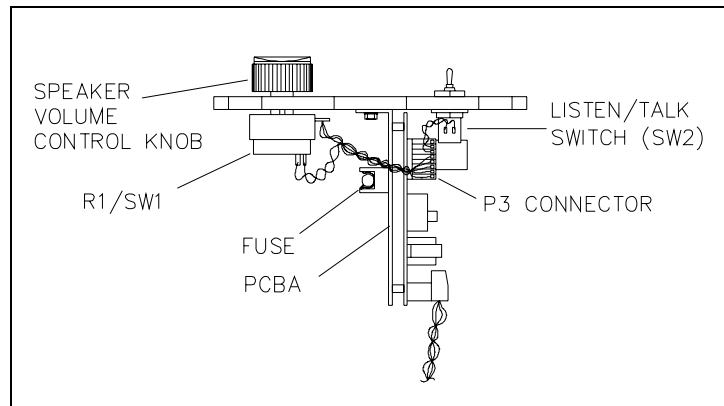


Figure 1. Location of Controls

NOTE: This will allow separation of the front cover from the PCBA's heatsink plate.

8. Discard the wired switch assembly.

Installing the New Front Panel Controls

1. Remove any hardware that might be pre-attached to the new speaker volume/on-off switch; it is not used in this application.
2. Ensure that the new speaker volume/on-off switch is turned fully counterclockwise to the off position.

- Insert the new speaker volume/on-off switch (R1/SW1) through the heatsink plate and through the front cover. Ensure that the associated anti-rotation pin is properly inserted into the amplifier heatsink plate's locking notch and the attached wires are positioned towards the fuse holder. Refer to Figure 1 and Figure 2.

- Place the new smaller sealing nut over the speaker volume/on-off switch's shaft and lightly tighten against the front cover.
- Ensure that the new Listen/Talk switch's supplied hex nut is screwed tightly against the switch body.
- Install the supplied anti-rotation ring (locking tab towards heatsink plate) onto the Listen/Talk switch's mounting threads.

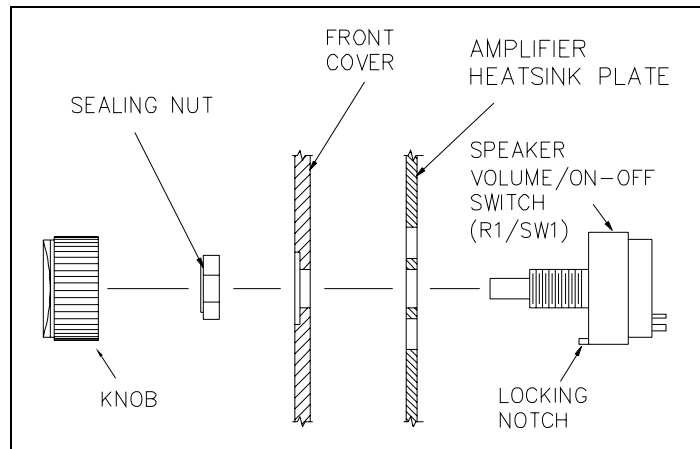


Figure 2. Speaker Volume/On-off Switch Assembly

- Insert the new Listen/Talk switch through the heatsink plate and front cover. (Position the bat handle towards the LISTEN position as indicated on the front panel label.)
- Place the new sealing nut over the bat handle and tighten against the front cover.
- Tighten the speaker volume on/off switch's sealing nut against the front cover.
- Reconnect the P3 connector to the PCBA.

- Carefully reinsert the front panel assembly into the unit's housing. Use caution to not pinch any wires between the front cover and the housing.

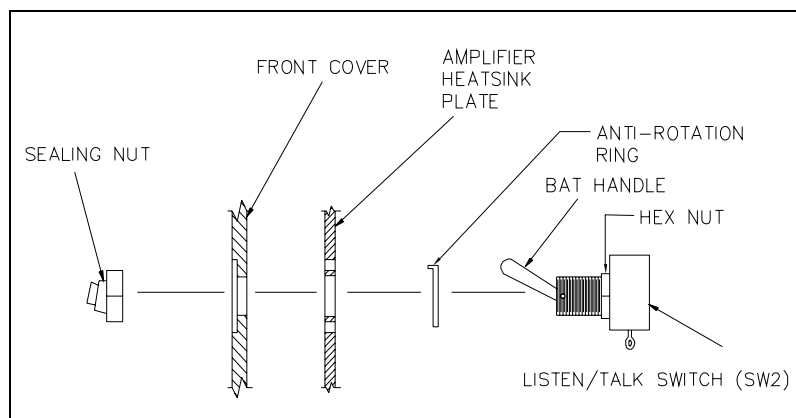


Figure 3. Listen/Talk Switch Assembly Diagram

- Reinstall the six front cover screws and tighten securely.
- With the new speaker volume on-off switch fully counterclockwise, attach the new knob. Position the knob's *white dot* adjacent to the *off dot* on the front panel label and retighten both set screws using the hex allen wrench.
- Reapply power and check for proper operation.